

# EG170-8

The **Extreme And Deep Cycle Battery**



## FEATURES

- High performance deep cycle technology batteries.
- Ideal for repeated cycling, heavy deep-discharge, high temperature and motive power applications.
- Eased and more safe maintenance to fill electrolyte level with water.
- Low self-discharge, long storage life.
- Increased durability and deep cycle ability.
- Vibration and shock-resistant.
- Corrosion-resistant terminal design.

## APPLICATIONS

- Airport express
- Toy golf carts
- Utility vehicles
- Aerial Lift



## SPECIFICATIONS

### 8 VOLT DEEP CYCLE BATTERIES

Model	Voltage (V)	Capacity (Amp-Hours)*		Capacity (Minutes) **		Weight		Terminal
		AMP HOURS (20 hr. Rate)	AMP HOURS (5 hr. Rate)	MINUTES (@ 56 Amps)	MINUTES (@ 25 Amps)	Kg	Lbs	
EG170-8	8	170	145	117	295	30.2	66.5	PT

\* The amount of (Amp-Hours) a battery can deliver when discharged at a constant rate at 80°F (27°C) for the 20-Hour rate and 86°F (30°C) for the 5-Hour rate and maintain a voltage above 1.75V/cell. Capacities are based on peak performance.

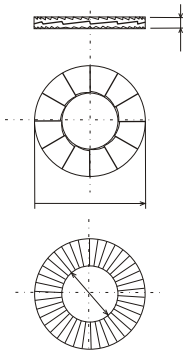
\*\* The number of minutes a battery can deliver when discharged at a constant rate at 80°F (27°C) and maintain a voltage above 1.75 V/cell. Capacities are based on peak performance.

## OPERATIONAL DATA

Operating Temperature	Self Discharge	Charging temperature compensation
-4°F to 113°F (-20°C to +45°C). At temperatures below 32°F (0°C) maintain a state of charge greater than 60%.	5-15% per month depending on storage temperature conditions.	0.028 VPC for every 10°F (5.55°C) above or below 77°F (25°C) (add 0.028 VPC for every 10°F (5.55°C) below 77°F and subtract 0.028 VPC for every 10°C above (77°F).

## Losse-Proof Fastener

For your critical bolting applications

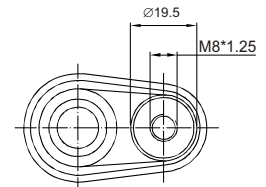


- Prevents loosening caused by vibration and dynamic loads
- Easy assembly and disassembly
- Locking function not affected by lubrication
- No special tools required
- Controllable preload
- Same temperature characteristics as bolt / nut of corresponding quality
- Reusable

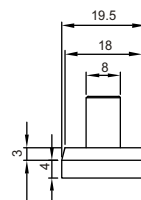
## TERMINAL CONFIGURATIONS



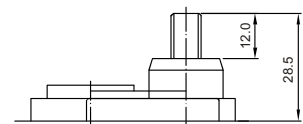
ELPT Terminal



TERMINAL TYPE



POS TERMINAL



NEG TERMINAL

## CHARGING INSTRUCTIONS

### Charger Voltage Settings (at 25°C/77°F)

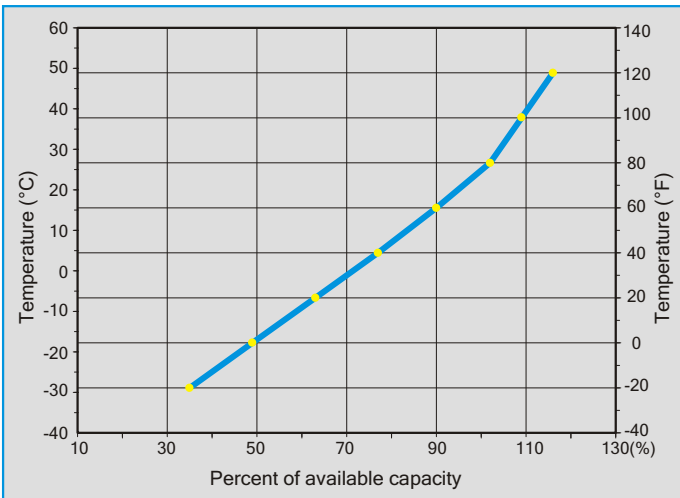
System Voltage	8V	24V	48V
Daily Charge	9.87	29.6	59.2
Float	8.80	26.4	52.8
Equalize	10.33	31.0	62.0

\* Do not install or charge batteries in a sealed or non-ventilated compartment.

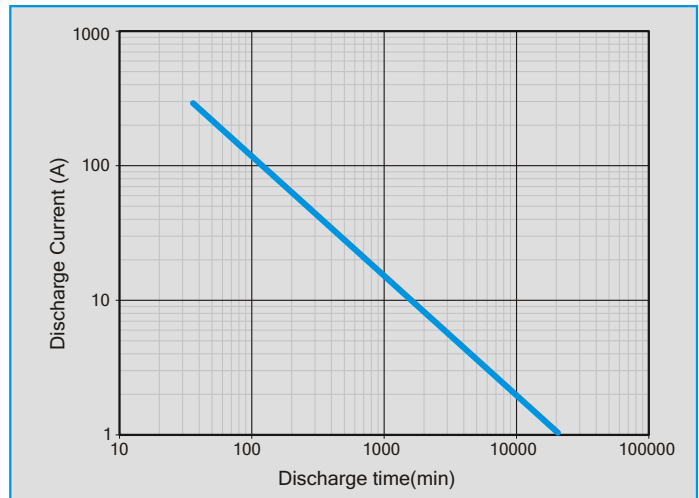
\* Constant under or overcharging will damage the battery and shorten its life as with any battery.

## BATTERY CHARACTERISTICS

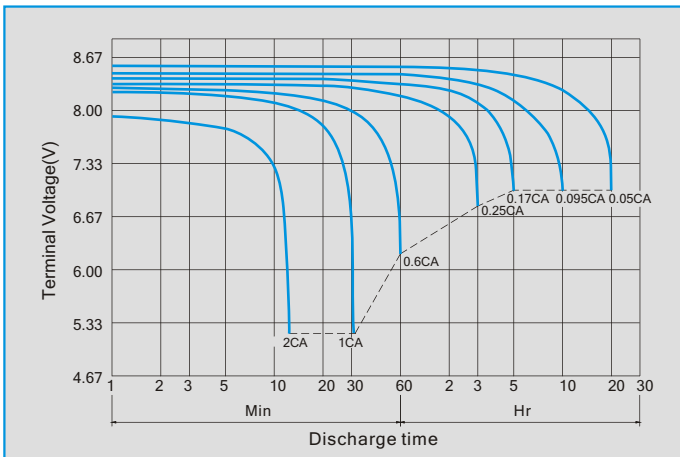
### PERCENT CAPACITY & TEMPERATURE



### PERFORMANCE

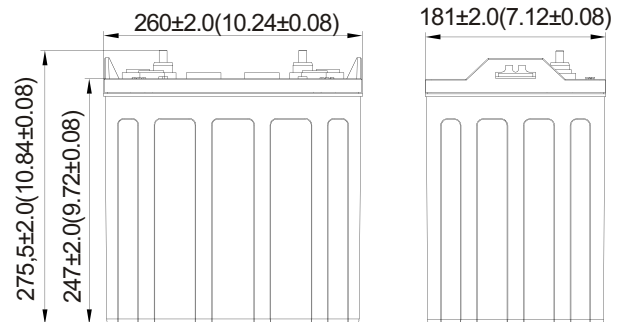
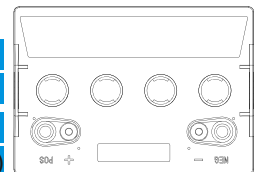


### Discharge characteristics (at 25°C/77°F)



### OUTER DIMENSIONS mm(inch)

Length (L)	Width (W)
260±2.0(10.24±0.08)	181±2.0(7.12±0.08)
Container Height (H)	Total Height (TH)
247±2.0(9.72±0.08)	275.5±2.0(10.84±0.08)



All data and artworks shall be changed without prior notice, BB reserves the right to explain and update the information contained hereinto.  
For operation, please refer to the instruction from technical manual.

A/1 REV. Dec. 2021

**USA:**  
B&B BATTERY(USA) INC.  
6415 RANDOLPH ST.COMMERCE, CA,90040 U.S.A.  
TEL:1-323-278-1900.1-800-278-8599  
FAX:1-323-278-1268  
E-Mail:sales@bb-battery.com

**CHINA FACTORY:**  
B.B. TECH(CHANGSHA) CO., LTD.  
No.57 DongsRoad, Changsha National Economic &  
Technical Development Zone, Changsha, Hunan PRC  
TEL:86-731-82955888  
FAX:86-731-82955111  
E-Mail:maggy@bb-battery.com

**EUROPE:**  
B&B BATTERY(EUROPE) B.V.  
SUITE 8, HAAKSBERGWEG 33, 1101  
BP AMSTERDAM, THE NETHERLANDS  
TEL: 31-30-320-0190  
MOBILE: 852-9128-2711  
E-Mail: dliu@bb-battery.com

**HONG KONG:**  
B&B BATTERY(Hong Kong) Co.  
TEL:852-2311-4918  
FAX:852-2739-1182  
E-Mail:bbhk@hkstar.com

**JAPAN:**  
B&B BATTERY(JAPAN) CO., LTD.  
1375-11 NARAHARA-MACHI,HACHIOJI,  
TOKYO 193-0803,JAPAN.  
TEL:81-426-25-6375  
FAX:81-426-25-6375  
E-Mail:miyata@bb-battery.com

**TAIWAN:**  
B.B. BATTERY(TAIWAN) CO., LTD.  
TEL:886-6-502-5150  
FAX:886-6-589-8087  
E-Mail:kevinlin@bb-battery.com