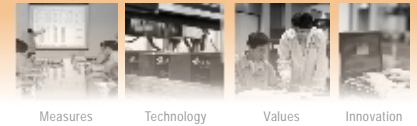




VRLA Rechargeable Battery

BPL40-12



FEATURES

- Maintenance free(no water topping-up required)
- No free acid(Non-spillable battery)
- Low self-discharge rate
- Can be used in any orientation(excluding used inverted)
- Absorbent Glass Mat technology for efficient gas recombination


APPLICATIONS

- UPS
- Wheelchairs
- Lawn Mowers
- Electronic Medical Equipme
- Golf-Carts




SPECIFICATIONS

| | |
|-----------------------------|--|
| Nominal Voltage | 12 V |
| Nominal Capacity | 40Ah @ 20 hour rate F.V.(1.75V/cell) |
| Approx. Weight | 14.6Kg(32.19lbs.) |
| Terminals | B2 (Fitting M5 bolt & nut) , I1 and I2 are optional |
| Internal Resistance | ≤8.0mΩ (Fully Charged) |
| Max. Discharge Current | 600 A (5 sec.) |
| Max. Charge Current | 12 A |
| Operating Temperature Range | Charge: 0°C~40°C(32°F~104°F) Discharge: -20°C~50°C(-4°F~122°F) Storage: -20°C~40°C(-4°F~104°F) |
| Container Material | Standard: ABS(UL94 HB) BPL40-12 Optional: Flame Retardant ABS(UL94 V-0) BPL40-12FR |



MH19884



CAM20310-2474-E-16

- IEC 61056-1
- JIS C 8702-1
- GB/T 19639.1

DIMENSION(mm/inch)

OUTER DIMENSIONS

TERMINAL TYPE

Length

197±1.5 (7.76±0.06)

Width

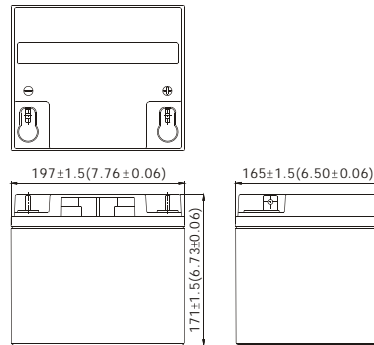
165±1.5 (6.50±0.06)

Container Height

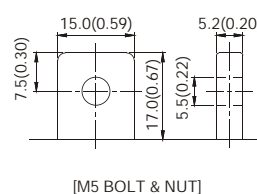
171±1.5 (6.73±0.06)

Total Height

171±1.5 (6.73±0.06)

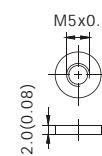


Terminal B2



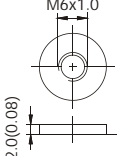
[M5 BOLT & NUT]

Terminal I1



[M5 BOLT & NUT]

Terminal I2



[M6 BOLT]

Terminal Hardware Initial Torque: B2/I1(4.0Nm±5%),I2(5.5Nm±5%)

Constant power discharge characteristics at 25 °C/77 °F

Unit: W

| Discharge Time F.V. (V/cell) | 5 Min | 10 Min | 15 Min | 30 Min | 1 Hr | 3 Hr | 5 Hr | 10 Hr | 20 Hr |
|------------------------------------|--------|--------|--------|--------|-------|-------|------|-------|-------|
| 1.80V | 1303.0 | 979.4 | 793.1 | 477.1 | 276.6 | 116.6 | 80.6 | 44.91 | 23.49 |
| 1.75V | 1509.0 | 1061.1 | 830.3 | 495.4 | 284.6 | 118.9 | 81.7 | 45.60 | 24.00 |
| 1.70V | 1600.0 | 1099.4 | 855.4 | 506.3 | 289.7 | 120.0 | 82.3 | 45.83 | 24.11 |
| 1.65V | 1674.0 | 1125.7 | 875.4 | 513.7 | 293.7 | 121.1 | 82.9 | 45.94 | 24.17 |
| 1.60V | 1726.0 | 1148.0 | 892.6 | 518.9 | 296.6 | 121.7 | 82.9 | 45.94 | 24.17 |

Constant current discharge characteristics at 25 °C/77 °F

Unit: A

| Discharge Time F.V. (V/cell) | 5 Min | 10 Min | 15 Min | 30 Min | 1 Hr | 3 Hr | 5 Hr | 10 Hr | 20 Hr |
|------------------------------------|--------|--------|--------|--------|-------|-------|------|-------|-------|
| 1.80V | 117.39 | 86.21 | 68.97 | 40.43 | 23.24 | 9.72 | 6.72 | 3.74 | 1.96 |
| 1.75V | 138.44 | 93.41 | 72.20 | 41.98 | 23.92 | 9.91 | 6.81 | 3.80 | 2.00 |
| 1.70V | 146.79 | 96.78 | 74.38 | 42.91 | 24.34 | 10.00 | 6.86 | 3.82 | 2.01 |
| 1.65V | 153.58 | 99.09 | 76.12 | 43.53 | 24.68 | 10.09 | 6.91 | 3.83 | 2.01 |
| 1.60V | 158.35 | 101.06 | 77.62 | 43.97 | 24.92 | 10.14 | 6.91 | 3.83 | 2.01 |

All data and artworks shall be changed without prior notice, BB reserves the right to explain and update the information contained hereinto.