

# ZELUS

## GEL Technology Battery

### GFT

# GFT 12/100

## 12V, 100Ah/C<sub>10</sub>

### FEATURES

- GFT was designed with solid lead plated and gelled electrolyte technology.
- A deep-cycle lead-acid battery is designed to deliver a maximum capacity and cycles as discharging.
- High temperature stability, mechanical strength and low acid displacement.
- Superior performance with deep discharges.
- Patented safety valve to have accurate pressure operating for long battery life.

### APPLICATION

- UPS
- Security
- Telecommunication
- Electronic Medical Equipment
- Emergency Lighting



### SPECIFICATIONS

Nominal Voltage	12 V
Nominal Capacity	100 Ah @ 10 hour rate F.V.(1.80 V/cell)
Approx. Weight	37.5Kg(82.67lbs.)
Terminals	L1 (M8 Male Stud)
Internal Resistance	≤6mΩ (Fully Charged )
Max. Discharge Current	800 A (5 sec.)
Max. Charge Current	20 A
Self Discharge	< 2% per month (25°C)
Operating Temperature Range	-20°C~55°C(-4°F~131°F)
Container Material	Standard: PP( UL 94-HB) GFT12/100 Optional: Flame Retardant PP(UL 94-V0) GFT12/100FR

ISO 9001



ISO14001



UL



MH19884

CE



CAM20310-2474-E-16

- GB/T 19638.2-2005
- IEC60896-21/22 2004

### DIMENSION(mm/inch)

### OUTER DIMENSIONS

### TERMINAL TYPE

#### Length

560±2.0 (22.05±0.08)

#### Width

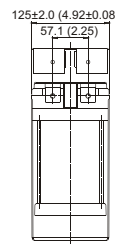
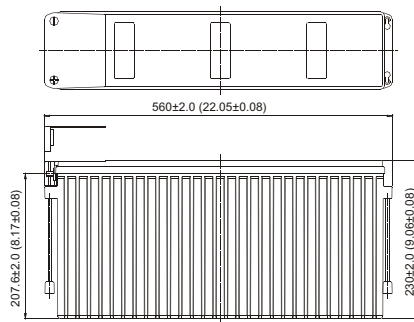
125±2.0 (4.92±0.08)

#### Container Height

230±2.0 (9.06±0.08)

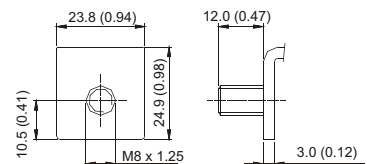
#### Total Height

230±2.0 (9.06±0.08)



#### TERMINAL TYPE

- Terminal L1



Terminal Hardware Initial Torque: 10.0Nm ±5%

### Constant power discharge characteristics at 25 °C/77 °F

Unit: W

F.V. (V/cell) \ Discharge Time	30 Min	1 Hr	3 Hr	5 Hr	10 Hr	20 Hr
1.80V	1192	695	303.2	213.8	120.0	63.02
1.75V	1213	716	309.3	217.0	121.6	63.98
1.70V	1225	731	313.0	218.9	122.5	64.48
1.65V	1236	739	315.5	219.7	122.8	64.66
1.60V	1239	747	317.1	220.3	122.9	64.68

### Constant current discharge characteristics at 25 °C/77 °F

Unit: A

F.V. (V/cell) \ Discharge Time	30 Min	1 Hr	3 Hr	5 Hr	10 Hr	20 Hr
1.80V	102.2	59.2	25.39	17.87	10.00	5.252
1.75V	104.3	61.0	25.90	18.14	10.13	5.332
1.70V	105.6	62.3	26.21	18.30	10.21	5.374
1.65V	106.9	63.0	26.42	18.36	10.24	5.389
1.60V	107.4	63.6	26.56	18.41	10.24	5.390

All data and artworks shall be changed without prior notice, BB reserves the right to explain and update the information contained hereinto.

For operation, please refer to the instruction from technical manual.

Trial A/1 REV. Mar. 2014

Powered by



B.B. Battery Co., Ltd.